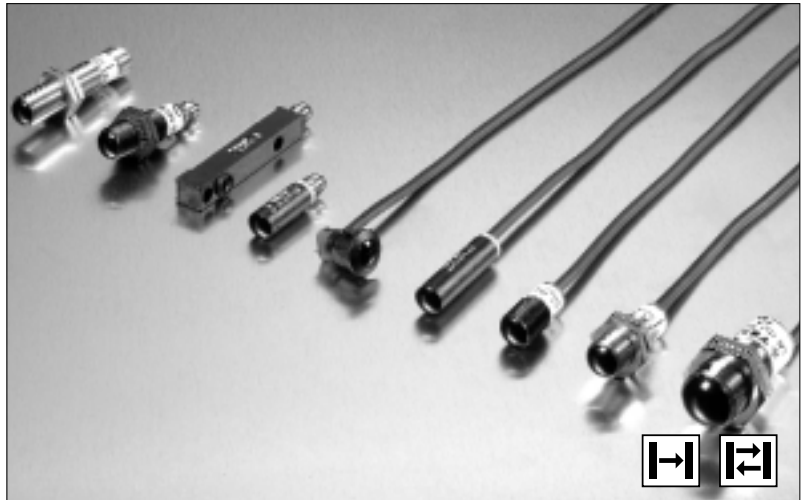


Remote Sensor Series

Description

- Operation mode and max sensing range:
Thru beam: Dependant on amplifier
Diffuse proximity: Dependant on amplifier
- Optional sensor monitor LED
- Wide variety of housings
- High tolerance to hostile environments
- Cable or plug connections



The remote sensor series, which consists of a transmitter LT and receiver LR, is made to operate in conjunction with a Telco photoelectric amplifier from the PA or MPA programmes.

The remote sensors are available in a wide range of housings, with either cable or plug connection, and may be used in thru beam or diffuse proximity mode.

The series is available with optional power-(LR) and output-(LT) monitor LEDs for use with any Telco photoelectric amplifier which has the sensor LED drive feature incorporated.

Technical Data

	LT	LR
Transmitter Diode	Ga Al As, (880 nm)	-
Photo Transistor	-	Silicon NPN
Cable Ø 4mm PVC Sleeves	2 x 0,25 mm ²	1 x 0,25 mm ² + shield
Min. cable bending radius	45 mm	

Environmental Data

Vibration	10 – 55 Hz, 0,5 mm	
Shock	30 g	
Light immunity, @ 20° incidence	101 Series 100 Series 110/120 Series	>50 000 lux >80 000 lux >100 000 lux
Temperature, operation	– 25 to +65 °C	
Temperature, storage	– 40 to +80 °C	
Sealing Class	IP 67	
Approvals	CE	

Remote Sensor Series

Available Types								
	Series	Optical Angle	Connection		5 m Cable	15 m Cable	3 pin, M8 Plug	4 pin, M12 Plug
			Housing Material	Housing Size				
Transmitter	101	+/- 8°	Polycarbonate	Ø10	LT 101 AP25 5	LT 101 AP25 15	LT 101 AP25 T3	-
				M12 x 1	LT 101 TP25 5	LT 101 TP25 15	LT 101 TP25 T3	-
			Nickel Plated Brass		LT 101 TB25 5	LT 101 TB25 15	LT 101 TB25 T3	-
			Stainless Steel		LT 101 TS25 5	LT 101 TS25 15	LT 101 TS25 T3	-
			Polyester		□ 9,5 x 11,5	LT 101 SG 5*	LT 101 SG 15*	LT 101 SG T3
			ABS	Ø12,7 (Snap Housing)	LT 101 S22 5*	LT 101 S22 15*	-	-
Receiver		+/- 9°	Polycarbonate	Ø10	LR 101 AP25 5	LR 101 AP25 15	LR 101 AP25 T3	-
				M12 x 1	LR 101 TP25 5	LR 101 TP25 15	LR 101 TP25 T3	-
			Nickel Plated Brass		LR 101 TB25 5	LR 101 TB25 15	LR 101 TB25 T3	-
			Stainless Steel		LR 101 TS25 5	LR 101 TS25 15	LR 101 TS25 T3	-
			Polyester		□ 9,5 x 11,5	LR 101 SG 5*	LR 101 SG 15*	LR 101 SG T3
			ABS	Ø12,7 (Snap Housing)	LR 101 S22 5*	LR 101 S22 15*	-	-

Transmitter	100	+/- 6°	Polycarbonate	Ø10	LT 100 AP38 5	LT 100 AP38 15	LT 100 AP38 T3	-
				M12 x 1	LT 100 TP38 5	LT 100 TP38 15	LT 100 TP38 T3	-
			Nickel Plated Brass		LT 100 TB38 5	LT 100 TB38 15	LT 100 TB38 T3	LT 100 TB58 J
			Stainless Steel		LT 100 TS38 5	LT 100 TS38 15	LT 100 TS38 T3	LT 100 TS58 J
Receiver		+/- 9°	Polycarbonate	Ø10	LR 100 AP38 5	LR 100 AP38 15	LR 100 AP38 T3	-
				M12 x 1	LR 100 TP38 5	LR 100 TP38 15	LR 100 TP38 T3	-
			Nickel Plated Brass		LR 100 TB38 5	LR 100 TB38 15	LR 100 TB38 T3	LR 100 TB58 J
			Stainless Steel		LR 100 TS38 5	LR 100 TS38 15	LR 100 TS38 T3	LR 100 TS58 J

Transmitter	110	+/- 8°	Polycarbonate	Ø10	LT 110 AP38 5	LT 110 AP38 15	LT 110 AP38 T3	-
				M12 x 1	LT 110 TP38 5	LT 110 TP38 15	LT 110 TP38 T3	-
			Nickel Plated Brass		LT 110 TB38 5	LT 110 TB38 15	LT 110 TB38 T3	LT 110 TB58 J
			Stainless Steel		LT 110 TS38 5	LT 110 TS38 15	LT 110 TS38 T3	LT 110 TS58 J
Receiver		+/- 3°	Polycarbonate	Ø10	LR 110 AP38 5	LR 110 AP38 15	LR 110 AP38 T3	-
				M12 x 1	LR 110 TP38 5	LR 110 TP38 15	LR 110 TP38 T3	-
			Nickel Plated Brass		LR 110 TB38 5	LR 110 TB38 15	LR 110 TB38 T3	LR 110 TB58 J
			Stainless Steel		LR 110 TS38 5	LR 110 TS38 15	LR 110 TS38 T3	LR 110 TS58 J

Transmitter	120	+/- 4°	Nickel Plated Brass	M18 x 1	LT 120 TB45 5	LT 120 TB45 15	-	-
		+/- 2,5°			LR 120 TB45 5	LR 120 TB45 15	-	-

Note: If the applicable amplifier has sensor LED-drive, add 'L' after the series number for sensor monitor LED eg. LT/LR 101L AP25 5.
Sensors marked * do not have this optional feature.
Photo amplifiers to be ordered separately.

Remote Sensor Series

Applicable Photoelectric Amplifiers and Ranges

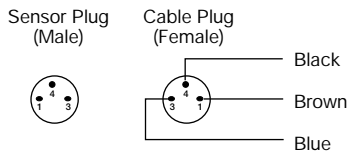
Series	Operation Modes	Photoelectric Amplifiers									
		PA 01	PA 09	PA 10		PA 11	MPA 21	MPA 41		MPA 81	
				A	B			A/B	C/D	A/B	C/D
101	Thru-beam	8 m	5 m	11 m	-	-	-	-	-	-	-
	Diffuse Proximity	65 cm	45 cm	90 cm	-	-	-	-	-	-	-
100	Thru-beam	10 m	-	-	15 m	18 m	10 m	8 m	4 m	8 m	4 m
	Diffuse Proximity	75 cm	-	-	1,1 m	1,1 m	75 cm	65 cm	35 cm	65 cm	35 cm
110	Thru-beam	23 m	-	-	35 m	40 m	25 m	18 m	9 m	18 m	9 m
	Diffuse Proximity	1,6 m	-	-	2 m	2 m	1,6 m	1,3 m	70 cm	1,3 m	70 cm
120	Thru-beam	45 m	-	-	60 m	70 m	45 m	35 m	18 m	35 m	18 m
	Diffuse Proximity	3,5 m	-	-	4 m	5 m	3,5 m	3 m	2 m	3 m	2 m

Note: For ranges using fibre optics, please refer to page 45.

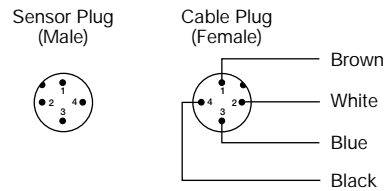
Connections

	Cable	M8 Plug/Cable	M12 Plug/Cable
Transmitter Signal	Red	Pin 1/Brown	Pin 1/Brown
Transmitter Ground	Black	Pin 3/Blue	Pin 3/Blue
Receiver Signal	Yellow	Pin 4/Black	Pin 4/Black
Receiver Ground	Shield	Pin 3/Blue	Pin 3/Blue

3 pin, M8

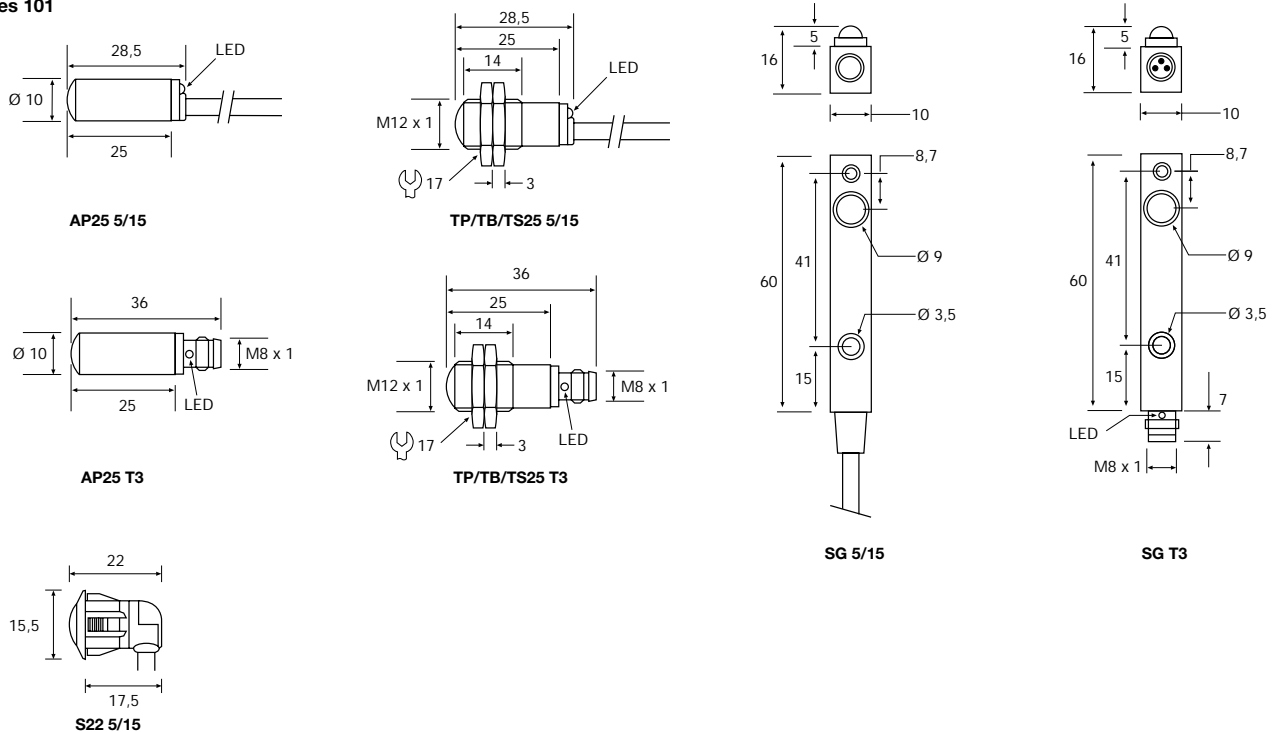


4 pin, M12



Dimensions and Descriptions

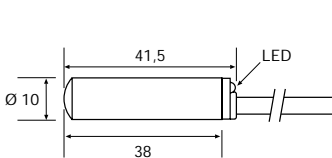
Series 101



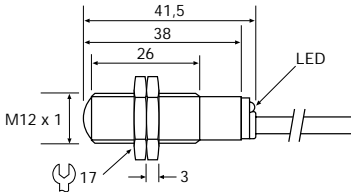
(Units in mm)

Dimensions and Descriptions

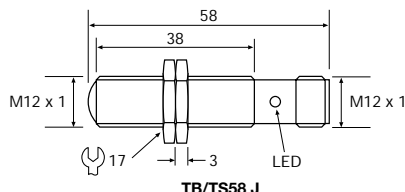
Series 100/110



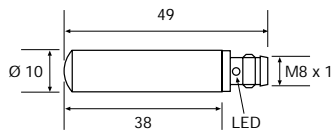
AP38 5/15



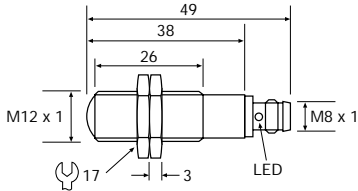
TP/TB/TS38 5/15



TB/TS58 J



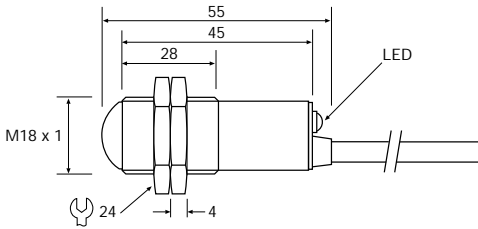
AP38 T3



TP/TB/TS38 T3

(Units in mm)

Series 120



TB45 5/15

(Units in mm)

Telco reserves the right to change specifications without notice.